



Stored Product Insects: Identification and Biology

Judy Johnson
USDA-ARS



San Joaquin Valley
Agricultural Science Center

Major Stored Product Pests

◆ Beetles



◆ Moths



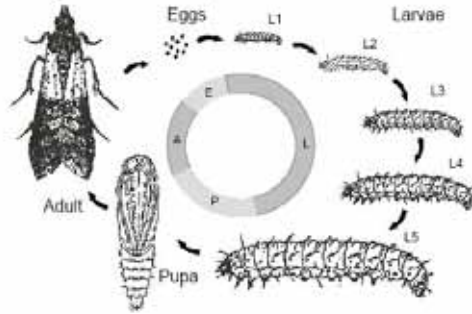
◆ Mites



◆ Book lice



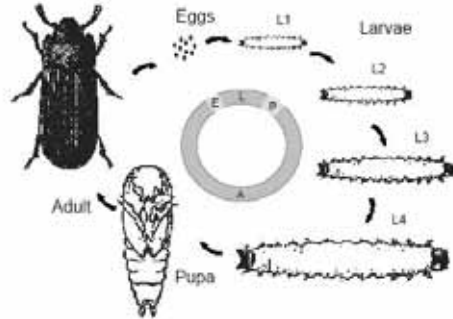
Life cycle of a stored product moth



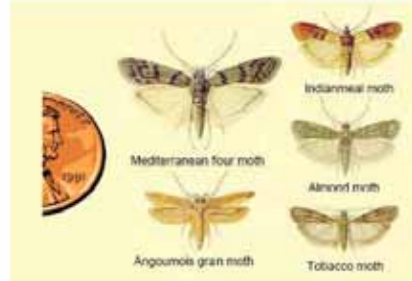
Relative sizes of stored product beetles



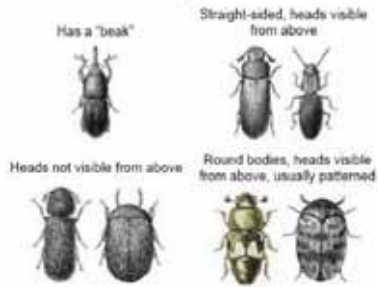
Life cycle of a stored product beetle



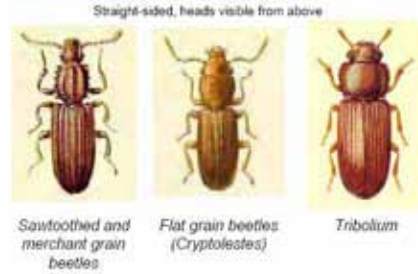
Relative sizes of stored product moths



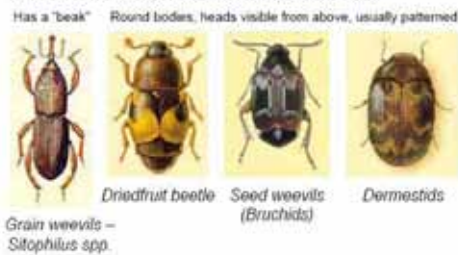
Identification of stored product beetles

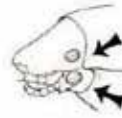
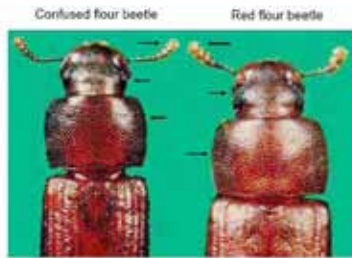


Identification of stored product beetles



Identification of stored product beetles





Although sometimes found in California dried fruits, it does not feed and reproduce in the product. Easily identified by its divided eyes.

Identification of stored product beetles

Heads not visible from above



Lesser grain borer Drugstore beetle Cigarette beetle

Identification of stored product moths



Hairs of fringe on hind wings short (Pyralid moths) Hairs of fringe on hind wings long

Identification of stored product moths

Hairs of fringe on hind wings short (Pyralid moths)



Identification of stored product moths



Identification of stored product moths

Hairs of fringe on hind wings long



Identification of stored product moths

Hairs of fringe on hind wings short (Pyralid moths)



Navel orangeworm

Identification of stored product larvae

No abdominal prolegs *Beetle larvae*

Elongate larvae, not grub-like

Grub-like or C-shaped, may be legless



Abdominal prolegs *Moth larvae*



Identification of stored product beetle larvae



Lesser grain borer



Bruchidae

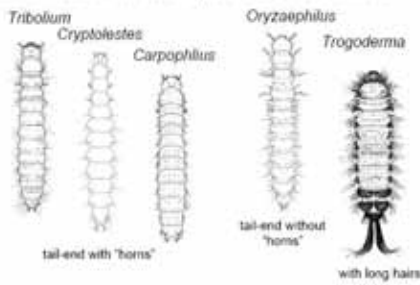


Cigarette beetle



Weevil

Identification of stored product beetle larvae



Identification of stored product moth larvae



Indianmeal moth



Tobacco moth



Raisin moth



Navel orangeworm

Internal Seed Feeders



Angoumois grain moth Maize weevil Lesser grain borer



Rice weevil



Bean weevil

Pests of stored foods and food plants



Flour Pests



Red/confused flour beetle

Mediterranean flour moth

Field pests of postharvest importance

